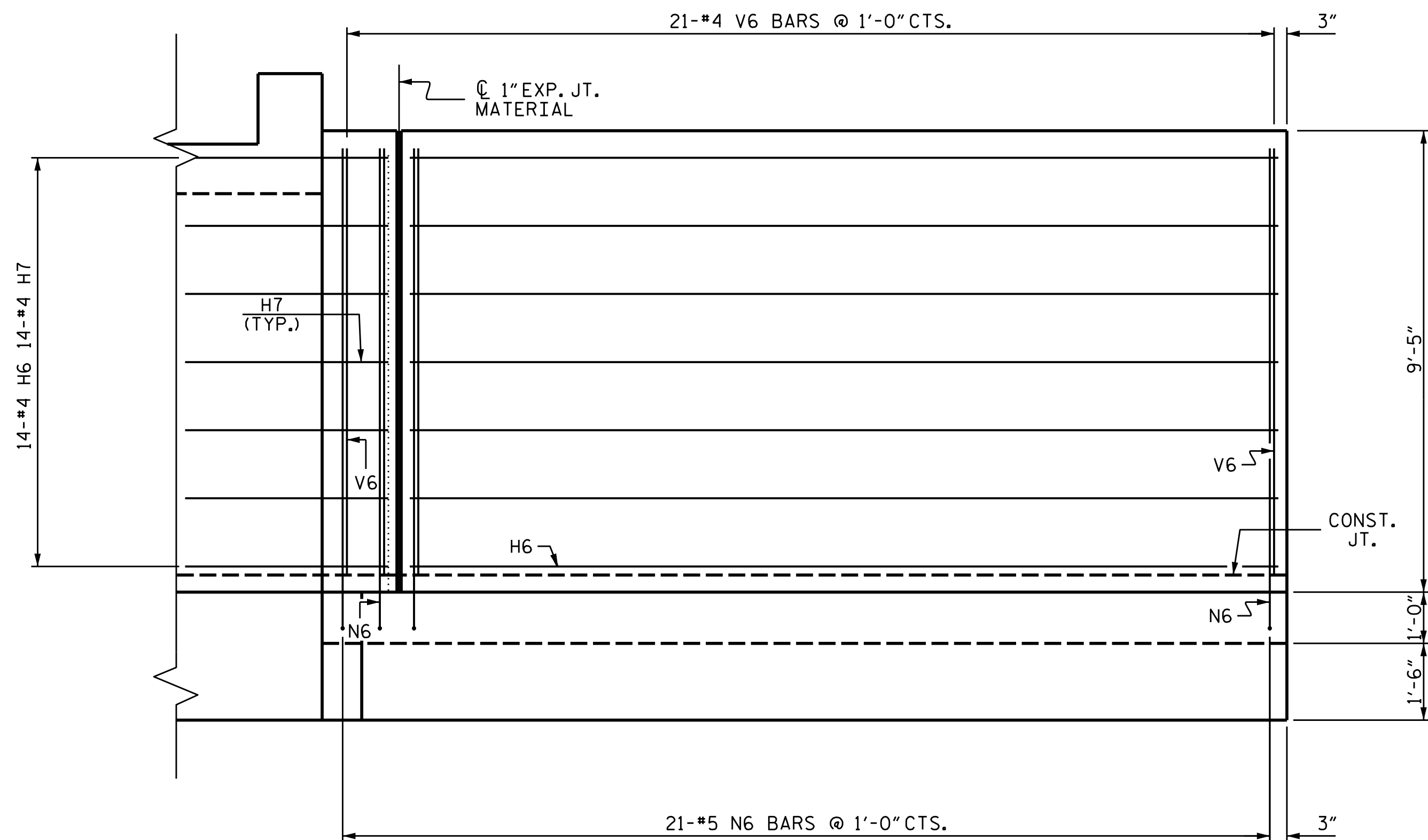
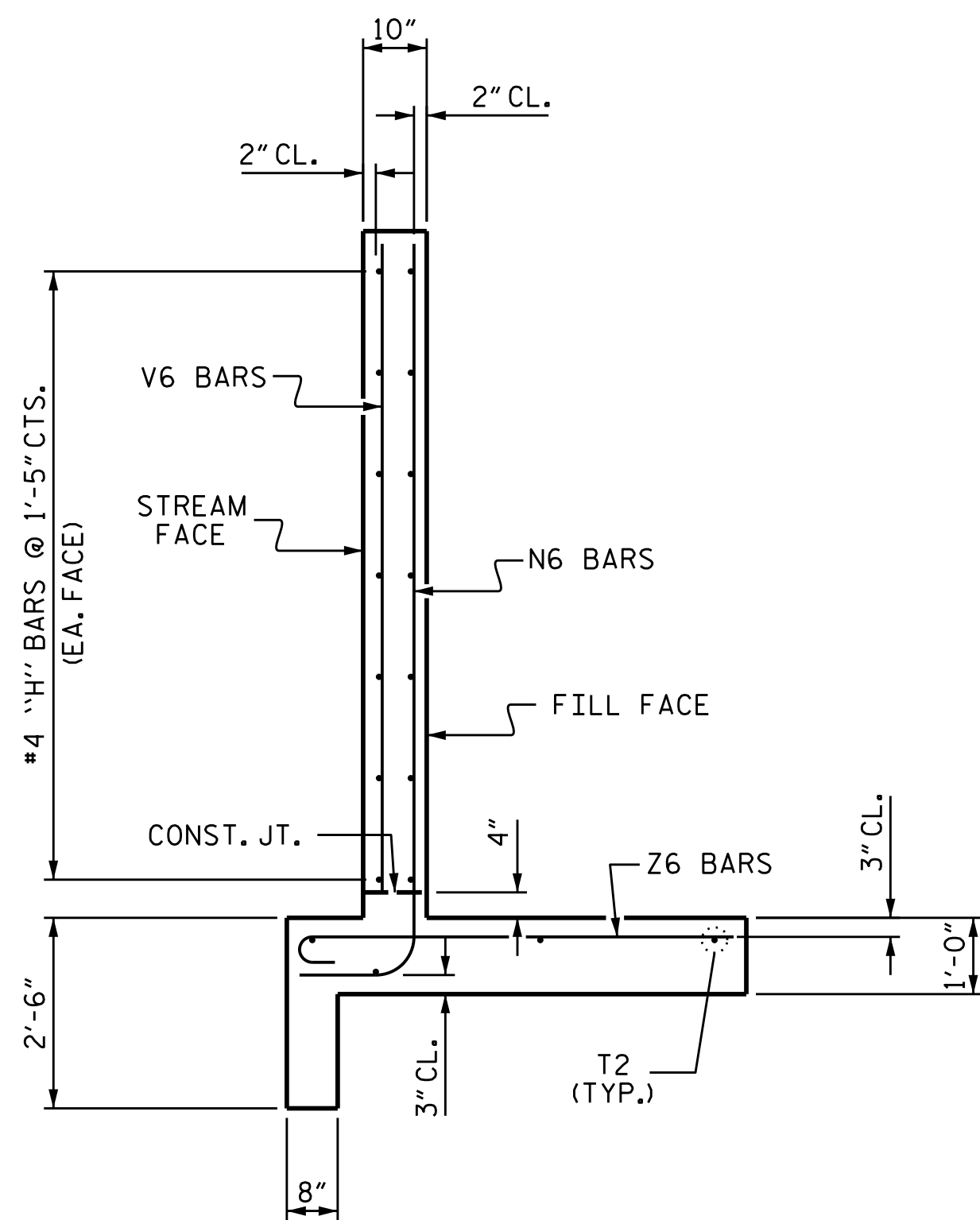


PLAN



ELEVATION



TYPICAL WING SECTION

[illegible]

NOTES

A 3 FOOT STRIP OF FILTER FABRIC SHALL BE ATTACHED TO THE FILL FACE OF THE WING COVERING THE ENTIRE LENGTH OF THE EXPANSION JOINT.

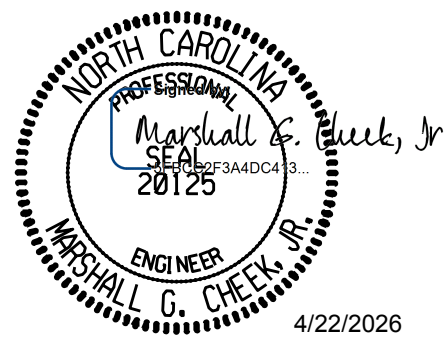
G1 BARS IN HEADWALL ARE INCLUDED WITH THE BARREL
REINFORCING STEEL.

PROJECT NO. HN-0031

TRANSYLVANIA COUNTY

STATION: 16+45.00 -L-

SHEET 7 OF 12




STATE OF NORTH CAROLINA
DEPARTMENT OF TRANSPORTATION
RALEIGH

WING W2 FOR
TRIPLE 10 FT. X 8 FT.
LEFT EXTENSION

DRAWN BY : ZCS DATE : 1/26
 CHECKED BY : MGC DATE : 2/26
 DESIGN ENGINEER OF RECORD: ZCS DATE : 2/26

2/24/2026
c:\workdir\ncdot-pw.bentley.com.ncdot-pw-01\zachary smith\d0363433\HN-0031-SMU-CU-87.dgn
ZSmith

DOCUMENT NOT CONSIDERED FINAL UNLESS ALL SIGNATURES COMPLETED		REVISIONS						SHEET NO.
 TGS ENGINEERS 201 W. MARION ST STE 200 SHELBY, NC 28150 PH (704) 476-0003 CORP. LICENSE NO.: C-0275	NO.	BY:	DATE:	NO.	BY:	DATE:	C-7 TOTAL SHEETS 12	
	1			3				
	2			4				